



Shown in accents woodtones cedar with spade hardware.

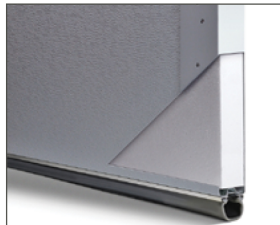
#### Colors<sup>1</sup>



#### Accents Woodtones<sup>5</sup>



#### Insulation



Polystyrene Insulation  
R-value<sup>2</sup>

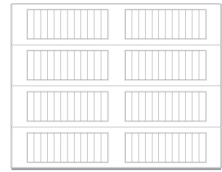
**R-9.65**

#### Exterior Hardware



# C983 STAMPED CARRIAGE HOUSE

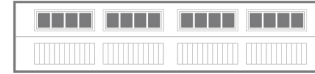
LONG PANEL | 27 GAUGE STEEL | POLYSTYRENE INSULATION | R-VALUE<sup>2</sup> R-9.65



#### Inserts



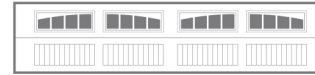
Stockton



Madison



2-2 Piece Arched Stockton



2-2 Piece Arched Madison



3 Piece Arched Stockton



3 Piece Arched Madison



4 Piece Arched Stockton



4 Piece Arched Madison



Cascade

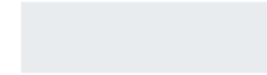
#### Glass<sup>3</sup>



Plain



Tinted



Frosted



Obscure

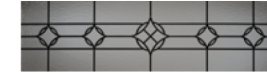


Glue Chip



Seeded

#### Designer Glass<sup>4</sup>



Newport



Hampton



Lasalle<sup>5</sup>



Florence

## APPEARANCE + LIFETIME PACKAGE

Upgrade lifetime protection plan to your garage door and its hardware. That not only sounds great but looks good too.